



# Center for Family Involvement VIRGINIA FAMILY TO FAMILY HEALTH INFORMATION CENTER (F2F) 2016 DATA REPORT

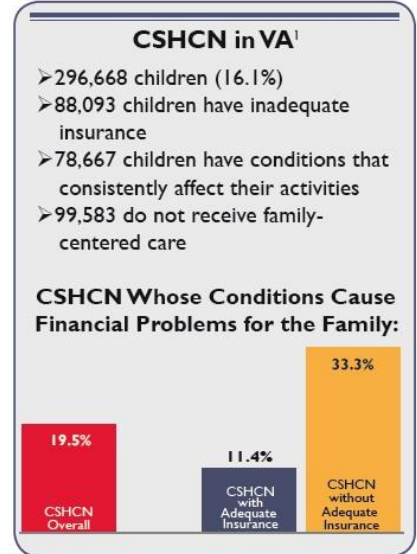
The Family to Family Network of Virginia (VA F2F), an initiative of the Center for Family Involvement at Virginia Commonwealth University's Partnership for People with Disabilities, has nine regional offices where family members of culturally and linguistically diverse children and young adults with disabilities have people in their own communities to call upon in their efforts to identify and obtain needed health related information, services and community supports. The F2F works with families to increase their skills as advocates, mentors and leaders so that children and young adults with disabilities and their families can lead the lives they want.

## 2016 IMPACT on a FAMILY

From a parent letter written to thank the VA F2F:



*"I wanted to take a moment to share my heartfelt thank you! I met with the agencies you told me about and it seems like lots of doors are now opening up for services for my son. I thought I was an organized person in my professional life, but was taken off guard by how unorganized I was in my personal life. I put a binder together that you suggested and even on days I don't feel strong, I represent strength because I have it all together and can pull off what I need without giving as much thought. You are a heaven sent angel and thank you for taking the time to listen to me and allowing me to cry the most painful tears I have ever shed."*



## 2016 HIGHLIGHTS

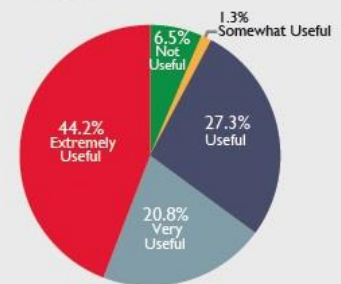
**Training Impacts** "We are proud of our work with the VA Title V Maternal and Child Health program to co-lead its new Medical Neighborhood initiative. The F2F will be working with the Title V program, the American Academy of Pediatrics, the University of Virginia and many other community members in Central Virginia to develop and implement training modules – one on Patient-Centered Medical Homes and one on Transition (for young adults). These modules are unique in that, for each topic, one module will be developed for patients and families and another for providers (not just physicians, but all professionals who assist CSHCN). The provider trainings will also be offered for CEU credits."

## OUTREACH<sup>2</sup>

Total Families Served: 3,321  
Total Professionals Served: 2,848  
Materials Disseminated: 19,089  
Trainings: 92

## IMPACT: Service Navigation

Families rate the usefulness of the support/information/resources they received from the VA F2F in helping them find and/or learn about community services (primary health care, intervention programs, translation services, etc.)<sup>2</sup>



## CONTACT

### Center for Family Involvement @ VCU

700 E. Franklin Street, 1st Floor ♥ Richmond, VA 23219 ♥ Phone: (804) 828-0352 ♥ Toll-Free: (877) 567-1122

Website: <http://www.centerforfamilyinvolvement.org> ♥ Contact: Dana Yarbrough, [dvyarbrough@vcu.edu](mailto:dvyarbrough@vcu.edu)

<sup>1</sup>National Survey of Children with Special Health Care Needs, NS-CSHCN 2009/10. Data query from the Child and Adolescent Health Measurement Initiative, Data Resource Center for Child and Adolescent Health website. Retrieved 04/03/2014 from [www.childhealthdata.org](http://www.childhealthdata.org).

<sup>2</sup>FY2016 F2F data represents families and professionals served through one-to-one contact, training, and broader outreach from June 1, 2015 through May 31, 2016.

This report was developed by Family Voices National Center for Family/Professional Partnerships ([www.fv-nclpp.org](http://www.fv-nclpp.org)) under grant number U49MC00149, funded by the Health Resources and Services Administration (HRSA) of the U.S. Department of Health and Human Services (HHS). This information or content and conclusions are those of the author and should not be construed as the official position or policy of, nor should any endorsements be inferred by HRSA, HHS or the U.S. Government.