

Family Connection SC is a statewide nonprofit organization that links families of children with special health care needs and disabilities with resources, support and education. We provide support to parents with a child or family member with any special health care need, such as an upcoming surgery, developmental delays, premature birth, physical limitations and all diagnoses including autism, asthma, ADHD and cerebral palsy. Our support for families includes a family-to-family network, statewide offices and a host of programs to educate, inspire and empower families and their children to live rich, fulfilling lives in spite of many challenges.

2016 IMPACT on FAMILY

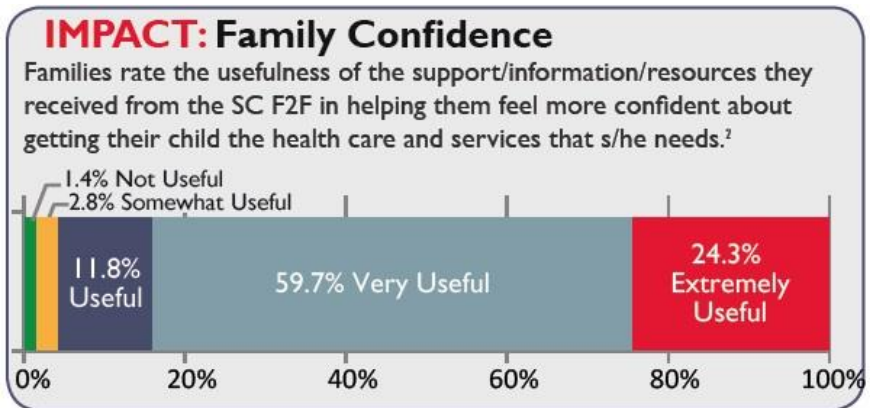
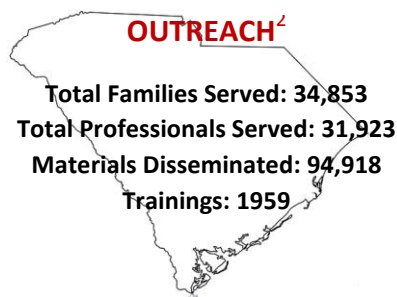
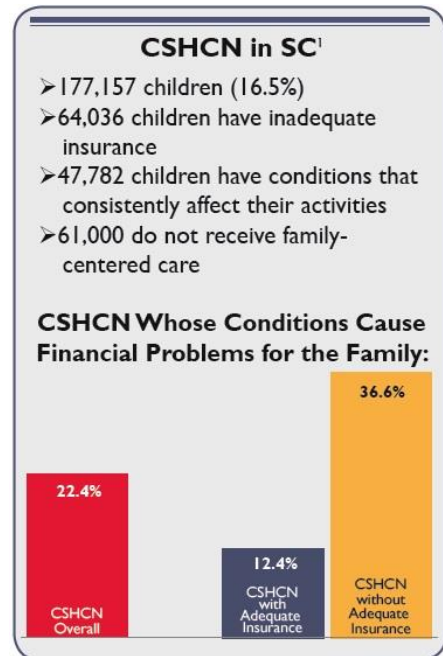
Family Impact Family Connection SC *Project Breathe Easy* for families with a child with asthma serves over 900 families a year, the majority of whom are at-risk and/or minorities. *Project Breathe Easy* has demonstrated a clear correlation between home visits and education provided and a reduction in ER use, an increase in medical home use, a decrease in missed school days and a decrease in missed parent workdays.



2016 HIGHLIGHTS

Autism Impact As part of a system of care that serves to increase capacity for children with behavioral health difficulties, the F2F is conducting an IRB approved, randomized controlled study on an evidence based prevention model called *Family Foundations Project: Autism Family Navigators*. We are working with Dr. Mark Feinberg of Penn State and Dr. Robert Hock of the University of SC College of Social Work. The program is a brief in home model focusing on the co-parenting relationship of two caring adults (not necessarily mom and dad) who have a child with new diagnosis of Autism, ages 0-6 years of age. Family Connection leads them through a six-week program, in their home to increase and to improve their co-parenting and quality of life.

Parenting Impact The SC F2F has received training and accreditation in Triple P Stepping Stones Primary Care. This is to begin to help the community with a simple, evidenced based parenting program for families with a child that has a special healthcare need.



CONTACT

Family Connection South Carolina
1800 St. Julian Place, Suite 104, Columbia, SC 29204 ♥ Phone: (803) 252-0914 ♥ Fax: (803) 420.4082
Website: <http://www.familyconnectionsc.org>
Contact: Amy A. (Nienhuis) Holbert, LISW-CP, MSW, Executive Director, Aholbert@familyconnectionsc.org

¹National Survey of Children with Special Health Care Needs. NS-CSHCN 2009/10. Data query from the Child and Adolescent Health Measurement Initiative, Data Resource Center for Child and Adolescent Health website. Retrieved 04/03/2014 from www.childhealthdata.org.
²FY2016 F2F data represents families and professionals served through one-to-one contact, training, and broader outreach from June 1, 2015 through May 31, 2016.
This report was developed by Family Voices National Center for Family/Professional Partnerships (www.fv-ncfpp.org) under grant number U40MC00149, funded by the Health Resources and Services Administration (HRSA) of the U.S. Department of Health and Human Services (HHS). This information or content and conclusions are those of the author and should not be construed as the official position or policy of, nor should any endorsements be inferred by HRSA, HHS or the U.S. Government.