



# MO Family to Family Resource Center MISSOURI FAMILY-TO-FAMILY HEALTH INFORMATION CENTER (F2F) 2016 DATA REPORT

The Missouri Family-to-Family serves individuals with disabilities and/or special health care needs, their families, and professionals who support them. They offer free, individualized, and family-centered support provided by family information specialists and trained family mentors. Their resources are available, in print or virtually, in English, Spanish, and other languages and alternative formats.

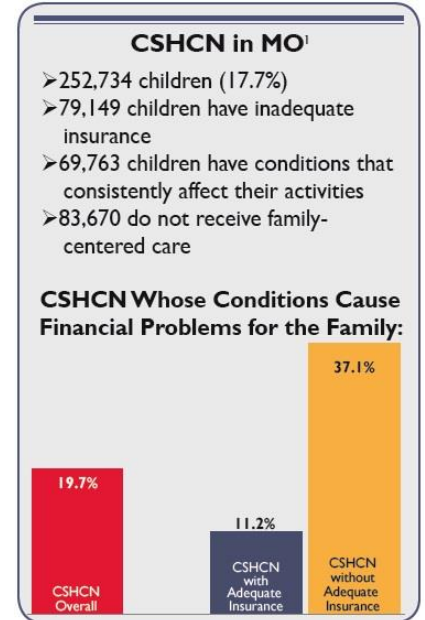
## 2016 IMPACT on a FAMILY

*Charting the Life Course* is a Framework that MO F2F developed to help CSHCN at any age or stage of life and their families to think about what they need to know, identify how to find or develop supports, and discover what it takes to live a good life. The MO F2F conducted a workshop to help families learn about this framework, and how to use the Trajectory Worksheet in planning for family members with a special health care needs. A mother of an 8 year old reported back to us that she applied what she had learned to her family's unique situation. One of her biggest takeaways from the workshop was that she and her family were not just planning for services, but were actually planning for LIFE! The mother shared her appreciation: *"The Trajectory Worksheet really helped us as a family think positively about the future and think about life experiences and supports that will help not only my son with special needs, but our entire family as we move forward with a vision for a good life. Thank you!"*

## 2016 HIGHLIGHTS

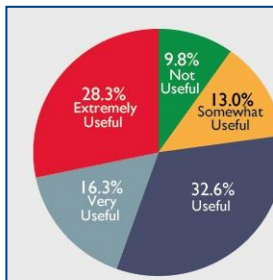
**Support Coordinator Impacts** MoF2F was instrumental in building the capacity of support coordinators to provide family centered services within the Title V: Special Health Care Needs and DMH: Division of Developmental Disabilities Programs. These systems adapted policies to support families through provision of family centered information, resources, and networking opportunities with other families. MoF2F partnered to host community wide events across the state reaching families and professionals and increasing their knowledge around the LifeCourse as it relates to the six core outcomes. MoF2F also continued to expand access and understanding of the LifeCourse framework for families and professionals providing supports locally, regionally, and nationally.

**Family Impacts** In 2,003, The MO F2F created the "F2F Network Folder." Now in its 7<sup>th</sup> edition, the folder has grown along with the movement to provide quality information and support families in Missouri, building on existing initiatives focusing on providing information and assisting families to navigate the system. The network folder unlocks access to needed services and supports, including information and emotional support. The F2F Network folder lists over 50 organizations that support families, from statewide service systems to parent support groups. It is available in alternative formats, including large print, plain text and Spanish. Since its inception, over 125,000 folders have been distributed.



## OUTREACH<sup>2</sup>

**Total Families Served: 9,799**  
**Total Professionals Served: 6,596**  
**Newsletter Subscribers: 4,000**  
**Materials Disseminated: 85,460**  
**Trainings: 364**



## IMPACT on Service Navigation

Families rate the usefulness of the support, information, and/or resources they received from the MO F2F in helping them find and/or learn about community services (primary health care, intervention programs, translation services, etc.)<sup>2</sup>

## CONTACT

**Missouri Family-to-Family, UMKC-Institute for Human Development**

215 W. Pershing, Kansas City, MO 64108 ♥ Phone: (816) 235.1763 ♥ Toll-Free: (800) 444.0821 ♥ Fax: (888) 503.3107

**Website:** <http://www.mofamilytofamily.org> ♥ **Contact:** Michelle Reynolds, [reynoldsmc@umkc.edu](mailto:reynoldsmc@umkc.edu)

<sup>1</sup>National Survey of Children with Special Health Care Needs. NS-CSHCN 2009/10. Data query from the Child and Adolescent Health Measurement Initiative, Data Resource Center for Child and Adolescent Health website. Retrieved 04/03/2014 from [www.childhealthdata.org](http://www.childhealthdata.org).  
<sup>2</sup>FY2016 F2F data represents families and professionals served through one-to-one contact, training, and broader outreach from June 1, 2015 through May 31, 2016.  
 This report was developed by Family Voices National Center for Family/Professional Partnerships ([www.fv-ncfpp.org](http://www.fv-ncfpp.org)) under grant number U40MC00149, funded by the Health Resources and Services Administration (HRSA) of the U.S. Department of Health and Human Services (HHS). This information or content and conclusions are those of the author and should not be construed as the official position or policy of, nor should any endorsements be inferred by HRSA, HHS or the U.S. Government.