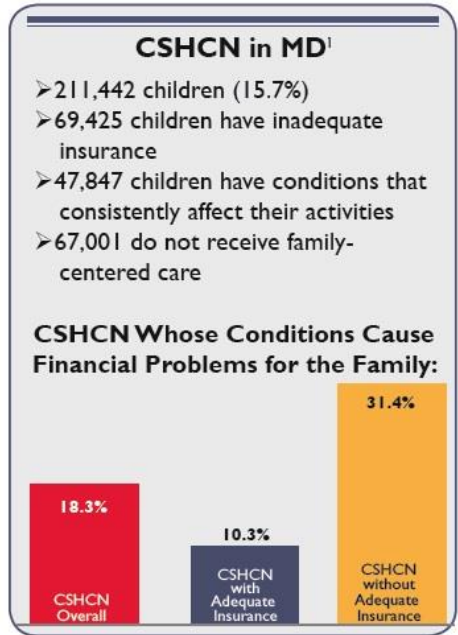


Founded in 1990, The Parents' Place was created by parents of children and youth with disabilities to help other parents and families facing similar challenges. The purpose of the F2F is to ensure that children and youth with special health care needs have the knowledge and assistance they need to make informed decisions that support their child's health. The F2F provides peer support to families, and information and education to families, professionals and the community at large.

**2016 IMPACT on a FAMILY**

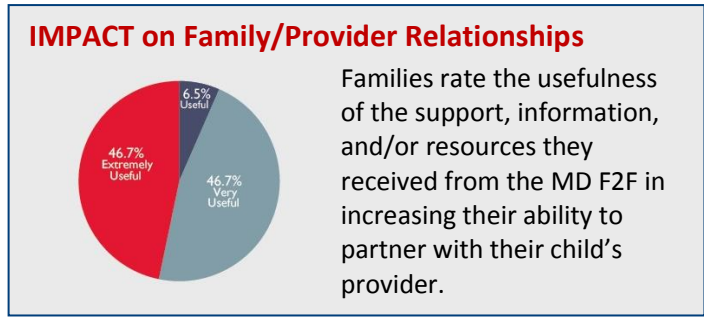
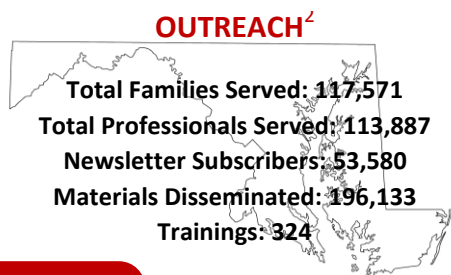
"We recently assisted the family of a child with autism and other disabilities that had encountered multiple barriers to receiving services for their child. The parent enrolled in our Health LEADers training program and became an active member of the Community of Care Consortium (COC). We helped her understand the newly expanded Maryland Habilitative Services Mandate that now requires coverage for autism treatment. After being refused services by their insurance company, the parent was able to successfully advocate for her child based on her knowledge of the new law and secure the necessary treatment. She had this to say: *'Because of the information and opportunities shared through the Health LEADers and COC programs, I was able to gain the confidence and knowledge to advocate not only for my child, but others as well. I recently provided testimony at the state and national level regarding issues related to children with autism and other developmental disabilities.'*"



**2016 HIGHLIGHTS**

**Peer Navigation Impact** In 2013 Parents' Place received two grants from the federal Maternal and Child Health Bureau (MCHB) for Autism and Epilepsy) in which they conducted three Quality Improvement Learning Collaboratives ("QI LC") for pediatric practices around developmental screening, medical home/care coordination, and transition to adulthood. With funds from those projects, they hired, trained, and placed parent partners in the pediatric practices participating in the QI LC to help families navigate their child's care and special education services. By the end of the QI LC, half of the pediatric practices hired these parent partners with their own funds. Given this success, in 2016, Parents' Place obtained funds from MD Title-V CSHCN and

hired five more parent partners for three years and placed them in other pediatric practices. This type of family peer navigation works really well and pediatricians are embracing the concept in Maryland. The F2F has integrated this model into their Early Hearing Detection and Intervention project (in partnership with MD Title-V CSHCN).



**CONTACT**

**Parents' Place of Maryland**  
801 Cromwell Park Drive, Suite 103 ♥ Glen Burnie, MD 21061 ♥ **Phone:** (410) 768-9100 ♥ **FAX:** (410) 768-0830  
**Website:** <http://www.ppmd.org> ♥ **Contact:** Rene Averitt-Sazone, Executive Director ♥ Pattie Archuleta, Family-to-Family Coordinator

<sup>1</sup>National Survey of Children with Special Health Care Needs. NS-CSHCN 2009/10. Data query from the Child and Adolescent Health Measurement Initiative, Data Resource Center for Child and Adolescent Health website. Retrieved 04/03/2014 from www.childhealthdata.org.  
<sup>2</sup>FY2016 F2F data represents families and professionals served through one-to-one contact, training, and broader outreach from June 1, 2015 through May 31, 2016.  
This report was developed by Family Voices National Center for Family/Professional Partnerships (www.fv-nfpp.org) under grant number U40MC00149, funded by the Health Resources and Services Administration (HRSA) of the U.S. Department of Health and Human Services (HHS). This information or content and conclusions are those of the author and should not be construed as the official position or policy of, nor should any endorsements be inferred by HRSA, HHS or the U.S. Government.